

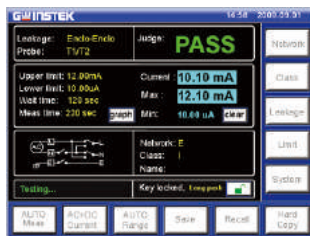
## LEAKAGE CURRENT TESTER



The GLC-9000, leakage current tester, is used to perform leakage current (or called touch current) tests on general purpose electric (IEC 60990) equipment. This tester engages with nine measurement networks (or called Measuring Device) to provide the simulation of human body whilst the EUT (equipment under test) is taking a leakage current testing, in compliance with the specific standards or regulations such as IEC, UL, JIS...etc..

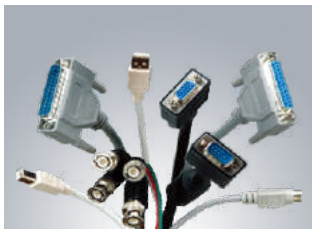
In order to provide a simple operation environment, the GLC-9000 equips large TFT LCD touch panel to configure system as well as to present the measurement settings information and result simultaneously. Besides, there are 50 preset testing conditions, which conform to IEC60990 and other standards, for general electric equipment can be recalled to reduce the setting time. In addition, 30 sets empty memory are available for user defined.

A Meter mode is also available for the GLC-9000, it uses the measurement terminal (T1/T2) to measure voltage as the same way of ordinary voltmeter. During the voltage measurement, the SELV function (safety extra low voltage) is applicable to detect the voltage value between measuring points whether exceeding the SELV setting.



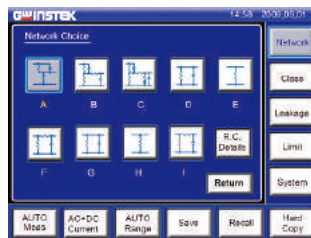
### Simple and Intuitive System

The color TFT touch screen makes operation intuitive and simple, whilst making it easier to observe test result.



### Various Standard Interfaces

The various practical interfaces are equipped as standard making control convenient and flexible.



### Various Measurement Network

Nine Measurement Network are available for measuring the leakage current of electrical and medical equipment.

## GLC-9000

### FEATURES

- Suitable for General Electrical of Leakage Current Measurement
- Touch Panel with Color LCD Display
- 9 Different Measurement Network to Simulate the Resistance of Human Body
- 50 Sets Preset Test Conditions Conform to the IEC 60990 ; 30 Sets Memories for Customer Defined
- 8 Different Types of Leakage Current
- Meter Function with SELV/CONV Function
- Upper & Lower Limitation for PASS/FAIL Judgment
- Various Leakage Current Measuring Mode : DC/AC/AC+DC/AC Peak
- Various Standard Interfaces : RS-232/ GPIB/USB Host & Device/EXT I/O



Front



Rear Panel

### APPLICATIONS

- Production Testing
- Research & Design
- Quality Assurance Verification

GLC-9000

**GW INSTEK**  
Simply Reliable

## SPECIFICATIONS

	Ranges	Range	Resolution	Accuracy	
<b>DC</b>	25.00mA	5.00mA ~ 25.00mA	10μA	±(0.2%rdg+3dgt)	
	5.000mA	0.500mA ~ 5.000mA	1μA	±(0.2%rdg+3dgt)	
	500.0μA	50.0μA ~ 500.0μA	0.1μA	±1.0%fs	
	50.00μA	4.00μA ~ 50.00μA	0.01μA	±1.0%fs	
<b>AC or AC+DC</b>	25.00mA	5.00mA ~ 25.00mA	10μA	10Hz<f≤100kHz ±(2.0%rdg+6dgt)	100kHz<f≤1MHz ±(2.0%rdg+10dgt)
	5.000mA	0.500mA ~ 5.000mA	1μA	±(2.0%rdg+6dgt)	±(2.0%rdg+10dgt)
	500.0μA	50.0μA ~ 500.0μA	0.1μA	±(2.0%rdg+6dgt)	±(2.0%rdg+10dgt)
	50.00μA	4.00μA ~ 50.00μA	0.01μA	±2.0%fs	±2.0%fs
<b>AC PEAK</b>	75.0mA	10.0mA ~ 25.0mA	100μA	20Hz<f≤1kHz ±(2.0%rdg+2dgt)	1kHz<f≤10kHz ±(5.0%rdg+10dgt)
	10.00mA	1.00mA ~ 10.00mA	10μA	±(2.0%rdg+2dgt)	±(5.0%rdg+10dgt)
	1.000mA	500μA ~ 1.000mA	1μA	±2.5%fs	±5.0%fs
	500.0μA	40.0μA ~ 500.0μA	0.1μA	±4.0%fs	±5.0%fs
<b>EUT</b> (V/I CHECK)	<b>Voltage</b> 300V	85V ~ 300V	0.1V	±(2%rdg+10dgt)	
	<b>Current</b> 10A	0.5A ~ 10A	0.1A	±(2%rdg+5dgt)	
<b>METER MODE</b>	AC/DC	10.0 ~ 300.0V	0.1V	±(3%rdg+2V)	
	AC+DC	10.0 ~ 300.0V	0.1V	±(3%rdg+2V)	
	AC Peak	15.0 ~ 430.0V	0.1V	±(3%rdg+2V)	
<b>INTERFACE</b>	RS-232, GPIB, USB Host & Device, EXT I/O				
<b>POWER SOURCE</b>	For GLC-9000 : AC 100V/120V/220V/230V±10%, 50/60Hz For EUT : AC 85V ~ 250V, 50/60Hz (264V Max.)				
<b>DIMENSIONS &amp; WEIGHT</b>	330 (W) x 150 (H) x 350 (D) mm; Approx. 5kg				

Specifications subject to change without notice.

LC-9000GD2DH

## ORDERING INFORMATION

**GLC-9000** Leakage Current Tester

## ACCESSORIES

User manual x 1, Power cord x 2, Test lead (GTL-207) x 2, CD x1 (Complete user manual), Alligator clips (GLC-01) x 4 (Red x 2/Black x 2), Foil probe (GLC-02) x 1

## OPTIONAL ACCESSORIES

**GTL-232** RS-232C Cable

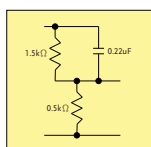
**GTL-240** USB Cable, USB 2.0, A-B Type (L Type), 1200mm

**GTL-246** USB Cable, USB 2.0 A-B TYPE CABLE, 4P

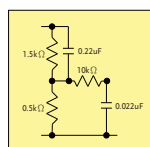
**GTL-248** GPIB Cable (2.0m)

## MEASUREMENT NETWORK (MD)

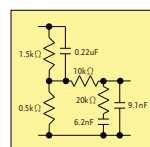
**MD-A**



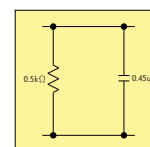
**MD-B**



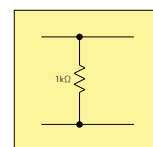
**MD-C**



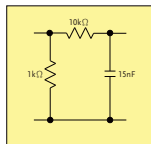
**MD-D**



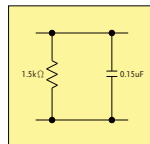
**MD-E**



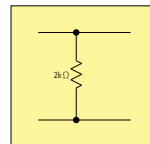
**MD-F**



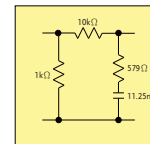
**MD-G**



**MD-H**



**MD-I**



Global Headquarters

**GOOD WILL INSTRUMENT CO., LTD.**

No.7-1, Jhongsing Road, Tucheng Dist., New Taipei City 236, Taiwan

T +886-2-2268-0389 F +886-2-2268-0639

E-mail: marketing@goodwill.com.tw

China Subsidiary

**GOOD WILL INSTRUMENT (SUZHOU) CO., LTD.**

No. 521, Zhujiang Road, Snd, Suzhou Jiangsu 215011 China

T +86-512-6661-7177 F +86-512-6661-7277

Malaysia Subsidiary

**GOOD WILL INSTRUMENT (SEA) SDN. BHD.**

No. 1-3-18, Elit Avenue, Jalan Mayang Pasir 3,

11950 Bayan Baru, Penang, Malaysia

T +604-6111122 F +604-6115225

Europe Subsidiary

**GOOD WILL INSTRUMENT EURO B.V.**

De Run 5427A, 5504DG Veldhoven, THE NETHERLANDS

T +31(0)40-2557790 F +31(0)40-2541194

U.S.A. Subsidiary

**INSTEK AMERICA CORP.**

5198 Brooks Street Montclair, CA 91763, U.S.A.

T +1-909-399-3535 F +1-909-399-0819

Japan Subsidiary

**TEXIO TECHNOLOGY CORPORATION.**

7F Towa Fudosan Shin Yokohama Bldg., 2-18-13 Shin

Yokohama, Kohoku-ku, Yokohama, Kanagawa,

222-0033 Japan

T +81-45-620-2305 F +81-45-534-7181

Korea Subsidiary

**GOOD WILL INSTRUMENT KOREA CO., LTD.**

Room No.503, Gyeonginro 775 (Mullae-Dong 3Ga,

Ace Hightech-City B/D 1Dong), Yeongduengpo-Gu,

Seoul 150093, Korea.

T +82-2-3439-2205 F +82-2-3439-2207

India Subsidiary

**GW INSTEK INDIA LLP.**

No.2707/B&C, 1st Floor UNNATHI Building,

E-Block, Sahakara Nagar, Bengaluru-560 092, India

T +91-80-6811-0600 F +91-80-6811-0626

**GW INSTEK**

Simply Reliable



Website



Facebook



LinkedIn