

## CoreLab Immunity test software



### Introduction

Corelab is 3ctest integrated test software, software and hardware together constitute the whole test system. At present, this software has met the GB/T 17626 series test, the national military standard GJB 151, GJB 181 and DO160 and other standard tests. Support Ethernet communication mode, greatly convenient for users to use; Automatic test sequence can be set to achieve remote one-click test operation, easier operation.

### Characteristics

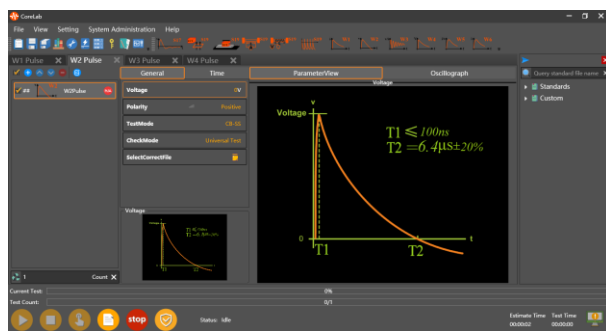
- > Compatible with Windows 7, Windows 8 and Windows 10 operating systems;
- > Support Ethernet interface and serial communication mode;
- > Can control DO160 series equipment;
- > Can control the US military standard series equipment;
- > Can control the national military standard series equipment;
- > Can control electronic and electrical experimental equipment;
- > Waveform and standard library interface display according to the series of added devices;
- > Powerful scheduling and test sequence, one-click remote control test;
- > Support single test/sequence test report export, support user-defined test report template;
- > Emergency stop function, one-click control, make the test safer.

## Highlights

- > Multi-window graphical UI;
- > Support parameter scheduling test, test sequence, one-click test, simple operation;
- > Can set customer information, automatically generate test reports, and support the export of test reports, convenient for users to record real-time data;
- > Intuitive device configuration and management interface, clear connection status;
- > Waveform saving and loading function, which can manage the saved waveform;
- > Standard library, device support updates.

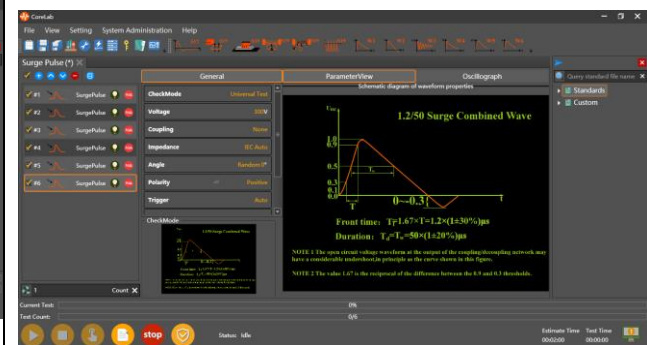
## Function Highlights Detailed Description

### Multi-window graphics UI:



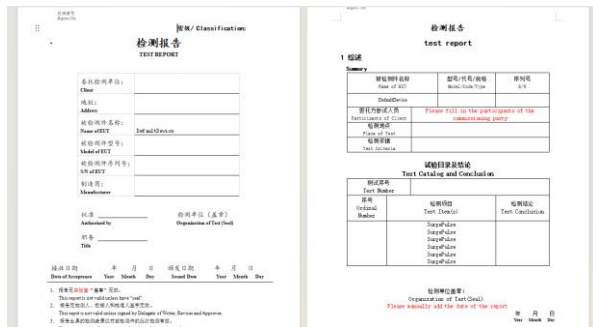
Support to open multiple test editing Windows at the same time, each window independent setting operation, with waveform legend, parameter meaning at a glance.

### Support parameter scheduling test, test sequence, one-click test, simple operation:



Multiple test step sequences can be added to a test, which is convenient for users to carry out a series of experiments on one or more sets of test objects, and achieve one-click test with simple operation. For test parameters, Corelab also supports scheduling Settings for multiple parameters to achieve iterative testing of parameters, avoiding frequent parameter setting.

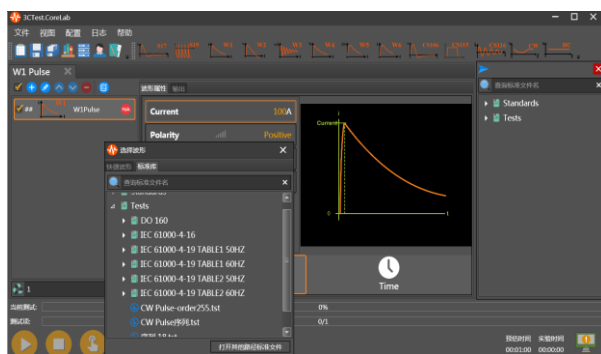
- Export test reports for users to record real-time data: Automatic generation of experimental results (reports)



You can set the default report header, or you can edit the test report template according to the instruction manual and examples. After the test, a report containing experimental data is automatically generated. You can also manually generate a report before the test starts to record some information during the test.

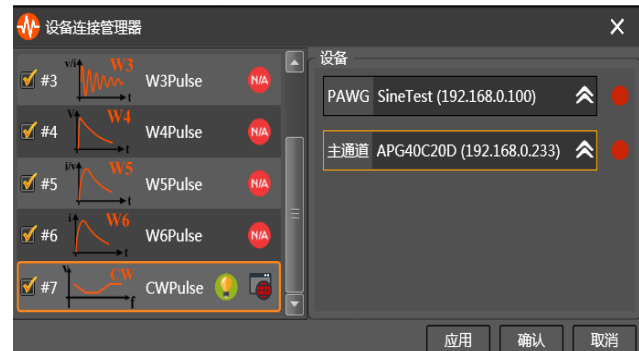
- The function of saving and loading waveform can manage the saved waveform

The experimental parameters can be set, saved, and quickly accessed for testing. Editable settings for saving file names and setting save paths.



Corelab can save standard library or custom programmed waveforms and load these saved files. Corelab manages user-defined programmed files, allowing users to customize folder names and save file names for easy management and re-call testing.

- Intuitive device configuration and management interface, you can see the connection status
- Device connection status:



All device information is displayed on a separate configuration interface, and the connection status and online status of the instrument are clear.

## Software support equipment

ADS 500	ETS 160MB
CCS 500	ISG 1800
CCS 600	LSS 160SM6
CDS 300	LSS 160SS
CMS 500&CMM 500	MFS 400/1200
CWS 60G	MFS xxAP
CWS 120G	MFS 1000AS1.5
CWS 120	PFS 0505D
CWS 600/800/1000	PFS 0610D
CWS 600/800/1000G	PFS 181
CWS 800N/1000N	PFS 22xx S/SD/D/SVD
CWS 800GN/1000GN	PFS 2216SV-12
CWS 1500N1 & CWS 1500N2	PFS 3016D
CWS 2000N1 & CWS 2000N2	PFS XXT1VD
CWS 600CT	PFS 3830T3
CWS 600T	PFS xxT1
CWS 2000C	PVSG 2500
CWS 2000T	PVSG 3000
DCP 1800	RWS 600
DOS-CS116	SxCxx
DOS 300	TPS-CS106
DOS 100MF	TPS-CS115
DOS 400F	TPS-160S17
DMS 200A	VDG 298
DMS 200B	VSG 335
EDS 10IC	VSS 298
EDS 20H	PDG 50C50S
EDS 30S	RWS 600G
EFT 400S/500S	RWS 600GUL
EFT 500	CCS 1000
EFT 500TC	CCS 800
EFT 700G	RSG xx(DMS)
EFT 700T	LSS 160SM8
EFT 700S	EDS 30TR
EFT 800G	
EFT 800T	
EFT 800S	

**Software Support Standard Library**

> DO160 22.01 PIN	> MIL CS116
> DO160 22.02 Single Stroke	> MIL-STD-704
> DO160 22.03 Multiple Stroke	> DO160 S19
> DO160 22.04 Multiple Burst	> IEC 61000-4-2
> DO160 S17	> IEC 61000-4-4
> DO160-E	> IEC 61000-4-5
>GBT/GB-T 17626.34	> IEC 61000-4-8
>GBT 28471.2-2012 (4.3.5)	> IEC 61000-4-9
> GJB 181-86	> IEC 61000-4-10
> GJB 181A 2003	> IEC 61000-4-11
> GJB 298 1987	> IEC 61000-4-12
> GJB 736.11 1990	> IEC 61000-4-18
> IEC 61000-4-16	> IEC 61000-4-29
> IEC 61000-4-19	> IEC 61000-4-34
> JEDEC JESD22 A114	>IEC 61730-2 2016
> JEDEC JESD22 A115	>IEC 62052-11-2020
> MIL CS106	>TBT 3498 2018
> MIL CS115	>GB-T 17626.4 2018
	>HB 20326.8- 2016
	>UL 60730
	>GD22 2015



## **SUZHOU 3CTEST ELECTRONIC CO., LTD.**

Add.: No. 99 E'meishan Road, SND, Suzhou, Jiangsu Province, China

Tel: +86 (0)512 6807 7192      Fax: +86-512-68079795

Sales Email: [globalsales@3ctest.cn](mailto:globalsales@3ctest.cn)      Service Email: [service@3ctest.cn](mailto:service@3ctest.cn)

[www.3c-test.com](http://www.3c-test.com)

3ctest is always striving for product innovation and quality improvement.

Product appearance and technical specifications are subject to change without further notice.

© 3ctest